

HMI Modernization

Control Engineering Magazine reported in November that nearly three-fourths of U.S. manufacturing plants are more than 30 years old. Given the globalization of manufacturing, U.S. firms will need to modernize and automate to compete. As a System Integrator, George T. Hall Company (GTH) has upgraded hundreds of facilities with SCADA and HMI systems to automate processes, collect and organize data and improve efficiencies. This experience, along with our vendor relationships and internal sales and technical personnel, qualifies us to design and implement the best solution to meet your specifications, your timeline, and your budget.



Schneider Magelis GTO Panels

The Schneider GTO is the ideal optimized terminal that does not compromise features or performance. It is available in sizes ranging from 5.7" to 12.1", allowing for clear viewing of data and ease of use for the operator.

The terminal provides:

- Energy Savings - LED backlight uses 55% less energy than HMIs using compact fluorescent.
- State of the art display - 65K color TFT for unsurpassed quality and clarity.
- Open and robust communication - Embedded Ethernet allows for easy integration.
- Rugged design - Available in 304 stainless to meet Food and Beverage and Pharmaceutical* requirements.

*Process traceability is possible with the Vijeo Designer Software IDS add on compliant with CFR21 part 11.

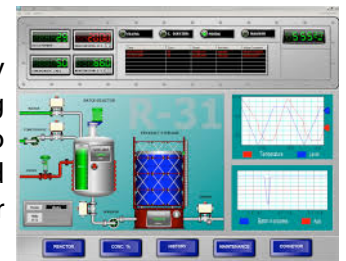


Watch the video on the [Magelis GTO HMI Touch Screen Panels](#).



Wonderware InTouch Machine Edition

The InTouch Machine Edition enables users to quickly create intuitive, secure, and highly maintainable HMI applications for intelligent machines and a variety of low level devices using the embedded operating systems. Seamlessly integrate machine and panel data directly into the Supervisory HMI system, making machine information more accessible to operations and management for a broader understanding of the entire operation with greater control, faster response times, higher operating efficiencies, and lower total cost of ownership.



Benefits of HMI Design Standardization

The Abnormal Situation Management (ASM) Consortium has released a 2nd edition of its display design guidelines: "Effective Console Operator HMI Design Practices." This best practices guidebook focuses on some key HMI standards involving graphic standards, naming conventions, and application design concepts.

By following these practices, users are able to eliminate operator confusion, reduce training costs and improve enterprise-level efficiencies.

Contact your GTH location near you today to learn more about these standards and how they can work for your facility.